

Win32 application support on OS/2

Highlights

InnoTek offers unique services to enable Windows 32bit applications (Windows 95/98/ME/NT/2000/XP) on OS/2

No changes to the original Windows applications will be made, source code access is not required

No Windows installation or license required on the target workstations

Local execution of applications delivers equivalent performance and feature set as on Windows

No royalties per seat, only individual efforts will be charged

Based on Open Source ODIN project

Comprehensive support offerings available

As a company that uses IBM OS/2 on client workstations, you are used to the high reliability and unmatched manageability that the IBM OS/2 operating system family offers. If you are a user of IBM Workspace On Demand, you will be familiar with the unique TCO savings only found on this advanced platform.

Application availability is a critical factor for the operation of your business

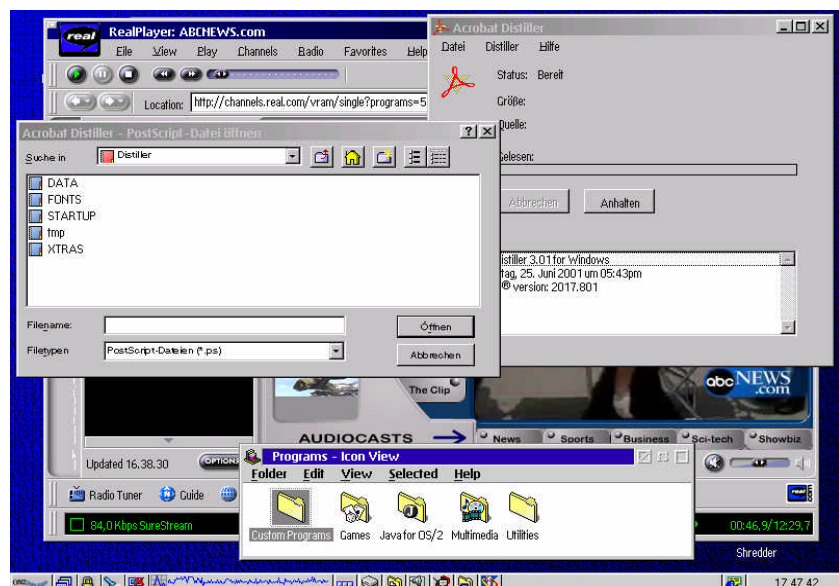
You've got a custom set of applications that are installed on your workstations. Apart from standard applications such as Lotus Notes, StarOffice, etc. and inhouse developed applications, this usually also includes industry specific 3rd party applications. Often, these 3rd party applications are not available for OS/2, no longer available for OS/2 or only a backlevel version is supported for OS/2 environments.

Also, there is an increasing need for several smaller productivity apps for purposes such as streaming video, viewing specific document or media formats, etc.

Even if you plan to transition to Windows NT/2000/XP, Linux or other operating systems, you will most likely face the application availability issue during the transition process.

Being able to deploy selected Windows 32bit software to your existing OS/2 workstation can solve the application availability issue for you.

ODIN - a Win32 subsystem for OS/2
Based on the IBM Open32 extension library introduced with OS/2 Warp 4, ODIN is a library that runs on top of any OS/2 Warp system and allows both porting Windows 32bit application to OS/2 as well as directly executing the applications on the OS/2



OS/2 Warp 4 running Realplayer 8.0 and Acrobat Distiller

workstation. Available at no cost in source code form, ODIN is the foundation of InnoTek's Win32 on OS/2 offerings. Since the very beginning, InnoTek has been a driving force behind the ODIN project and offers unique experience in enabling Win32 applications on OS/2.

Local execution delivers high performance and low costs

Other solutions such as Windows Terminal Server or Citrix MetaFrame provide excellent Windows 32bit compatibility but due to their remote display technology require large investments in server capacity and network bandwidth. Also remote execution often results in poor performance.

InnoTek's Win32 offering based on ODIN means local program execution delivering roughly the same performance and behavior as under the Windows platforms. All major OS/2 aspects such as multitasking, multithreading and networking are fully supported.

OS/2 extension library adds Win32 functionality

InnoTek's offering based on ODIN consists of two additional libraries (DLLs) that provide support for over 1500 Win32 APIs and a loader for Win32 binaries (PE). Most function

calls are directly translated to the equivalent OS/2 functionality and native implementations for calls having no counterparts are provided. This effectively turns applications running with ODIN into native OS/2 applications leveraging all OS/2 features and providing excellent integration with the system.

A Win32 application that has been enabled and certified on OS/2 will be shipped with a custom version of the ODIN runtime libraries. Therefore, multiple applications using different revision of the runtime libraries can be supported without generating library conflicts and guaranteeing a well defined environment.

No Windows installation required

Through the use of ODIN, the InnoTek offering does not require a Windows installation or license for the workstations the applications will run on. All libraries (DLLs) used by the applications are provided by ODIN in a custom implementation.

Open Source project guarantees investment protection and low costs

The ODIN libraries are available under a very liberal Open Source license. Improvements to the libraries made while enabling selected applications are submitted back into the ODIN source tree and therefore

decrease the efforts required to enable a future application over time.

By relying on InnoTek's experience to enable your Win32 applications, you already benefit from about 6 man years development that have gone into the ODIN project.

Support

InnoTek offers various services related to enabling Win32 applications on OS/2.

- Analysis of applications for use with ODIN on OS/2
- Enabling and certifying Win32 applications on the OS/2 platform
- Assistance with rollout for Win32 applications
- Defect support related to the OS/2 enablement of Win32 applications

The base application analysis is offered for free by InnoTek and includes a statement about the feasibility, estimated costs and potential issues.

During the enabling phase, no changes to the existing Win32 application will be made by InnoTek. It is not required to have source code access to the application although this usually lowers costs by approximately 35-60%.

InnoTek Win32 enablement services at a glance

ODIN applications run like any other OS/2 application on the OS/2 desktop. No special requirements regarding the hardware and software apply. Using ODIN usually does not notably increase the system capacity (processor speed, memory size) requirements.

More information: <http://www.innotek.de/services/odin>

Hardware requirements:

- PC system capable of running OS/2
- Minimum of 32MB RAM
- OS/2 supported network card for network access

Software requirements:

- OS/2 Warp Version 4, Fixpak 5 or higher
- OS/2 Warp Convenience Pack
- If requested, support for Warp 4 prior to Fixpak 5 and Warp 3 can also be provided

innotek[®]

InnoTek Systemberatung GmbH
Aspenweg 16
88097 Eriskirch
Germany
<http://www.innotek.de>
services@innotek.de

IBM, OS/2 are trademarks of International Business Machines Corporation.
Microsoft, Windows, Win32, Terminal Server are trademarks of Microsoft Corporation.
Other company, product and service names may be trademarks or service marks of others.